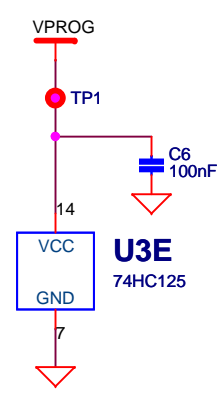
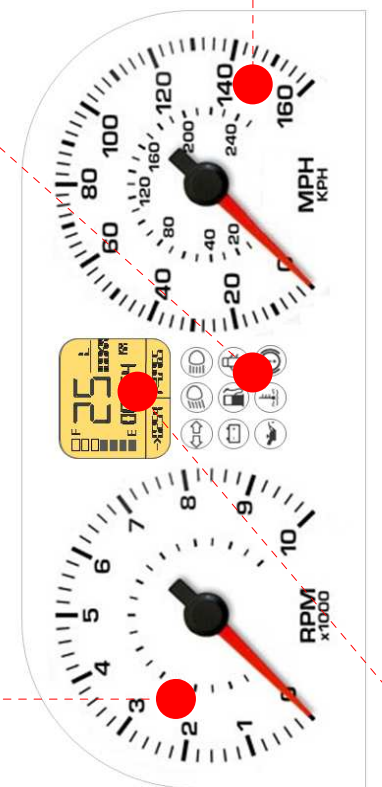
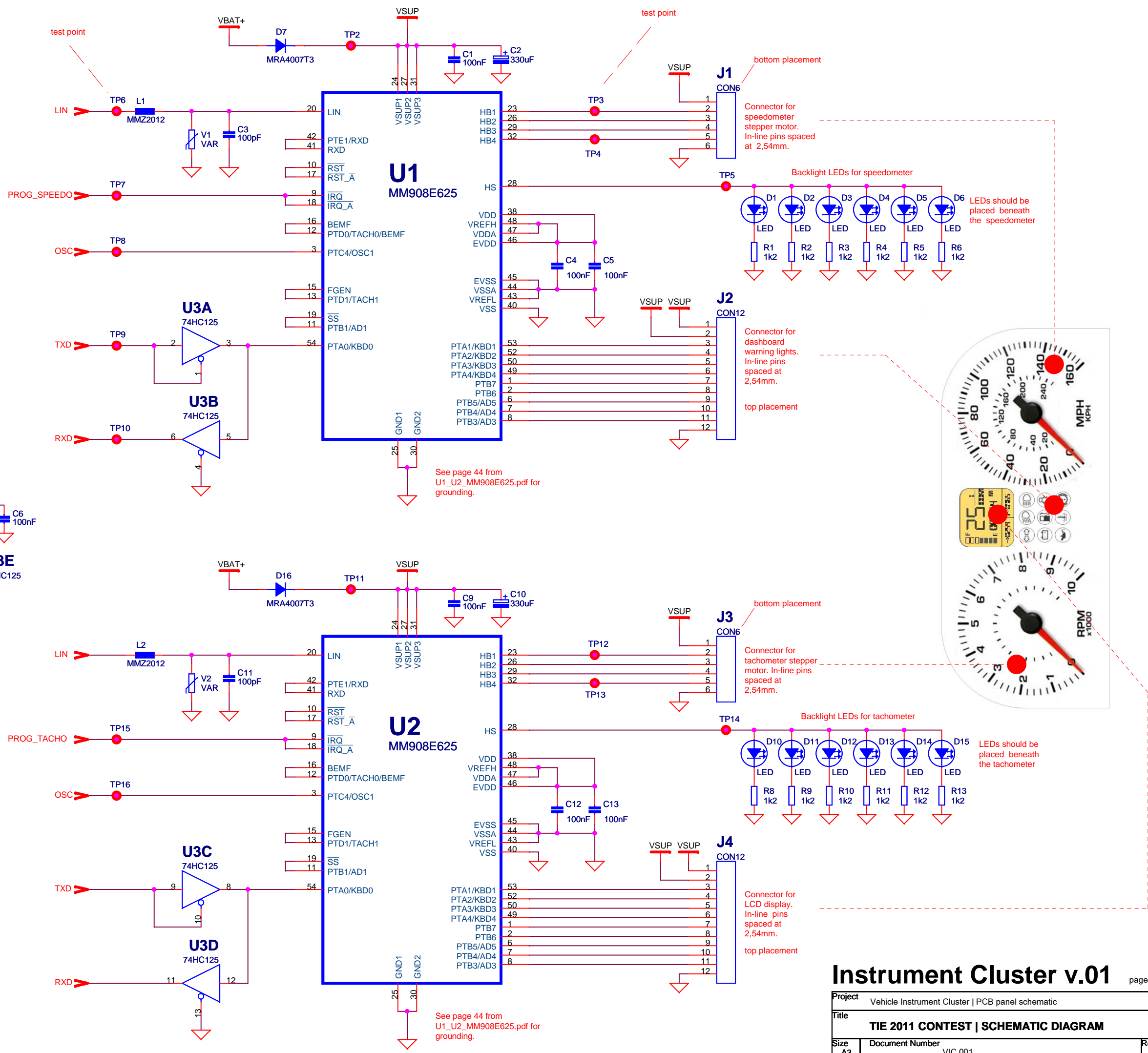


PCB panel main connector. In-line pins spaced at 3,96mm.



Bill of materials (BOM)

Item	Quantity	Reference	Value	Package
1	7	C1, C4, C5, C6, C9, C12, C13	100nF	C0402
2	2	C2, C10	330uF	D (7343)
3	2	C3, C11	100pF	C0402
4	12	D1...D6, D10...D15	LED	LED 1206
5	3	D7, D16	MRA4007T3	SMA (403D)
6	2	J1, J3	CON6	Header 0.100" 6 way
7	2	J2, J4	CON12	Header 0.100" 12 way
8	1	J5	CON10	Header 0.156" 10 way
9	2	L1, L2	MMZ2012	L0805
10	12	R1, R2, R3, R4, R5, R6, R8, R9, R10, R11, R12, R13	1k2	R0402
11	16	TP1... TP16	test point	test pad
12	2	U1, U2	MM908E625	54-PIN SOICW-EP
13	1	U3	74HC125	SOIC-14 and TSSOP-14
14	2	V1, V2	VAR	V1608



Instrument Cluster v.01

Project: Vehicle Instrument Cluster PCB panel schematic		
Title: TIE 2011 CONTEST SCHEMATIC DIAGRAM		
Size: A3	Document Number: VIC 001	Rev: A
Date: Thursday, April 14, 2011	Sheet: 1 of 1	